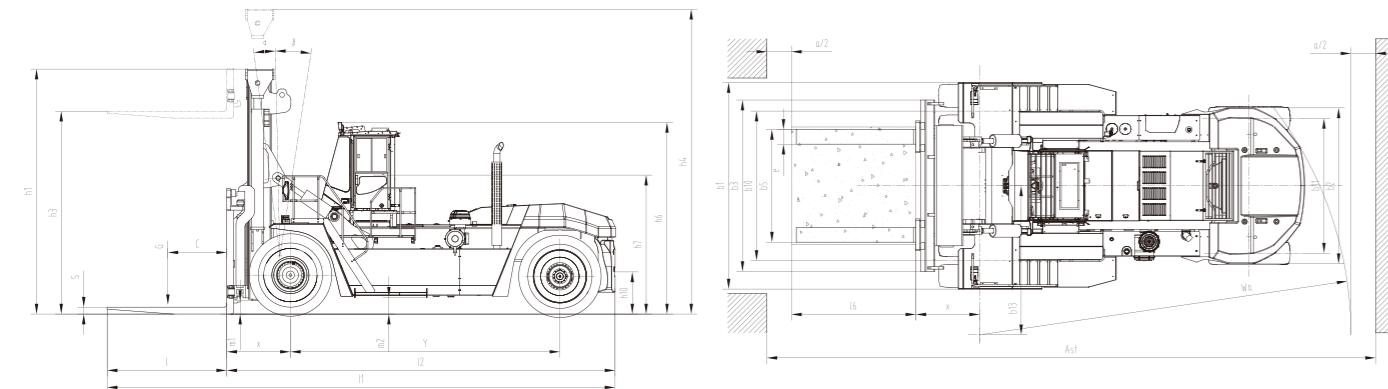
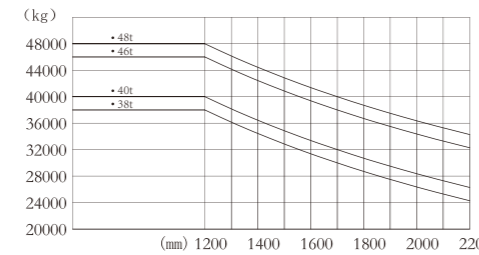


Heavy IC Forklift Truck

		HANGCHA GROUP CO.,LTD.						
		CPCD380-W61	CPCD400-W61	CPCD460-W61	CPCD480-W61			
Distinguishing mark	1.1	Manufacturer						
	1.2	Manufacturer's type designation						
	1.3	Drive: electric (battery or mains), diesel, petrol, fuel gas						
	1.4	Operator type: hand, pedestrian, standing, seated, order-picker						
	1.5	Rated capacity/rated load	Q (kg)	38000	40000	46000	48000	
	1.6	Load centre distance	c (mm)	1200	1200	1200	1200	
	1.8	Load distance, centre of drive axle to fork	x (mm)	1300	1300	1300	1300	
	1.9	Wheelbase	y (mm)	5500	5500	5500	5500	
	Weight	2.1	Service Weight	kg	55000	56000	61000	62500
Tyres, chassis	3.1	Tyres: solid rubber, superelastic, pneumatic, polyurethane						
	3.2	Tyre size, front						
	3.3	Tyre size, rear						
	3.5	Wheels, number front / rear (x = driven wheels)						
	3.6	Tread, front	b10 (mm)	3050	3050	3050	3050	
	3.7	Tread, rear	b11 (mm)	2750	2750	2750	2750	
	4.1	Tilt of mast/fork carriage forward/backward	α/β(°)	6/10	6/10	6/10	6/10	
	4.2	Height, mast lowered	h1 (mm)	4600	4600	5000	5000	
	4.3	Free lift	s (mm)	130	130	130	130	
Dimensions	4.4	Lift	h3 (mm)	4000	4000	4000	4000	
	4.5	Height, mast extended	h4 (mm)	6570	6570	7000	7000	
	4.7	Height of overhead cabin	h6 (mm)	3920	3920	3920	3920	
	4.8	Seat height relating to SIP	h7 (mm)	2840	2840	2840	2840	
	4.12	Coupling height	h10 (mm)	860	860	860	860	
	4.19	Overall length	l1 (mm)	10360	10360	10360	10360	
	4.20	Length to face of forks	l2 (mm)	7920	7920	7920	7920	
	4.21	Overall width	b1/b2 (mm)	4215/3180	4215/3180	4215/3180	4215/3180	
	4.22	Fork dimensions	s/e/l (mm)	130*300*2440	130*300*2440	130*300*2440	130*300*2440	
	4.24	Fork-carriage width	b3 (mm)	3500	3500	3500	3500	
	4.25	Distance between fork-arms	b5 (mm)	1050/3000	1050/3000	1050/3000	1050/3000	
	4.31	Ground clearance, laden, below mast	m1 (mm)	320	320	320	320	
	4.32	Ground clearance, centre of wheelbase	m2 (mm)	370	370	370	370	
	4.34	Aisle width with load length 2400mm	Ast (mm)	12340	12340	12340	12340	
	4.35	Turning radius	Wa (mm)	7600	7600	7600	7600	
	4.36	Minimum pivoting point distance	b13 (mm)	3040	3040	3040	3040	
	Performance Data	5.1	Travel speed, laden/unladen	km/h	24/28	23/28	23/27	22/27
		5.2	Lift speed, laden/unladen	m/s	0.31/0.36	0.30/0.35	0.27/0.30	0.26/0.30
		5.3	Lowering speed, laden/unladen	m/s	0.43/0.42	0.43/0.42	0.44/0.40	0.44/0.40
		5.5	Drawbar pull, laden/unladen	N	370000/-	370000/-	370000/-	370000/-
		5.7	Gradeability, laden/unladen	%	25/-	25/-	25/-	25/-
5.10		Service brake	Hydraulic control, wet multiplate type					
		Parking brake	Electromagnetic hydraulic control, clamp type					
Combustion-engine		7.1	Engine manufacturer/type	CUMMINS/QSM11-CT3	CUMMINS/QSM11-CT3	CUMMINS/QSM11-CT3	CUMMINS/QSM11-CT3	
		7.2	Engine power	kW	250	250	250	250
		7.3	Rated speed	r/min	2100	2100	2100	2100
	7.4	Number of cylinders/displacement	(-)/(cm ³)	6/10800	6/10800	6/10800	6/10800	
	7.9	Vehicle electrical system voltage	V	24	24	24	24	
	7.10	Battery voltage/nominal capacity	V/Ah	2*12/120	2*12/120	2*12/120	2*12/120	
		Rated torque	N·m/r/min	1674/1400	1674/1400	1674/1400	1674/1400	
		Transmissions Manufacturer	DANA	DANA	DANA	DANA		
		Transmissions Type	TE-30	TE-30	TE-30	TE-30		
		Stage FWD/RVS	5/3	5/3	5/3	5/3		
Addition data	10.1	Operating pressure for attachments	bar ₃	255	255	255	255	
	10.2	Oil volume for attachments	l/min	500	500	500	500	
	10.3	Hydraulic Tank - capacity (drain & refill)	liter	650	650	650	650	
	10.4	Fuel tank capacity	liter	650	650	650	650	
	10.7	Sound pressure level at the driver's seat	dB (A)	78	78	78	78	



38-48t mast:(Pneumatic)

Type	Model	Max. fork height	Overall height		Tilt range	Capacity			
			Lowered	Extended		Load capacity at 1200mm Double tire			
			F/R						
			(°)	38t	40t	46t	48t		
			mm	kg	kg	kg	kg		
Wide view mast G400MX	G400M360	3600	4400	6170	6/10	38000	40000	/	/
	G400M400	4000	4600	6570	6/10	38000	40000	/	/
	G400M430	4300	4750	6870	6/10	38000	40000	/	/
	G400M450	4500	4850	7070	6/10	38000	40000	/	/
	G400M480	4800	5000	7370	6/10	38000	40000	/	/
	G400M500	5000	5100	7570	6/10	38000	40000	/	/
	G400M550	5500	5350	8070	3/6	37000	39000	/	/
	G400M600	6000	5600	8570	3/6	36000	38000	/	/
	G400M650	6500	5850	9070	3/6	34500	36500	/	/
	G400M700	7000	6100	9570	3/6	33000	35000	/	/
Wide view mast G480MX	G480M360	3600	4800	6570	6/10	/	/	46000	48000
	G480M400	4000	5000	6970	6/10	/	/	46000	48000
	G480M430	4300	5150	7270	6/10	/	/	46000	48000
	G480M450	4500	5250	7470	6/10	/	/	46000	48000
	G480M480	4800	5400	7770	6/10	/	/	46000	48000
	G480M500	5000	5500	7970	6/10	/	/	46000	48000
	G480M550	5500	5750	8470	3/6	/	/	45000	47000
	G480M600	6000	6000	8970	3/6	/	/	44000	46000
	G480M650	6500	6250	9470	3/6	/	/	42500	44500
	G480M700	7000	6500	9970	3/6	/	/	41000	43000



HANGCHA

Hangcha Europe GmbH

Mariechen-Graulich-Straße 12a,
65439 Flörsheim am Main,
Germany

Tel: 0049-61453769188
E-mail: admin@hangchaeurope.com

Mob: 0049-16096548808 (Thomas Dittrich)
E-mail: thomas.dittrich@hangchaeurope.com
Zip Code Area (1,2,3,4,5,6,7)

Mob: 0049-1605272481 (Jens Abmuth)
E-mail: jens.assmuth@hangchaeurope.com
Zip Code Area (0,8,9)

www.hangchaeurope.com



Follow us on Instagram, Facebook, YouTube, and download the "Hangcha Forklift" App on the App Store and Google Play.



HANGCHA GROUP CO.,LTD. reserves the right to make any changes without notice concerning colors, equipment, or specifications detailed in this brochure, or to discontinue individual models. The colors of trucks, delivered may differ slightly from those in brochures.



Heavy IC Forklift Truck

with capacities of 38,000 to 48,000kg

The World of Hangcha



HANGCHA

2021 VERSION 1/COPYRIGHT 2021.07

Heavy IC Forklift Truck

Environment/
Efficiency/
Economy



Features

- / DANA TE30 new type gear box, CUMMINS QSM11 3A emission engine and KESSLER D102 heavy-load driving axle are utilized. The key parts are internationally well-known brand products of which the quality is stable and durable.
- / Equipped with seat operating presence sensing (OPS) system to improve safety; The controller area network (CAN) bus LCD display is applicable, which has the function of built-in weight display, fault diagnosis and chinese-english display query system.
- / The independent dynamic braking oil circuit system can reduce the complexity of hydraulic system and oil cost.
- / With the load sensing variable main hydraulic system, the non-working energy consumption is very small.
- / Equipped with electronic automatic shift 5F/3R gearbox, make the power strong, start fast and smooth;
- / With the electric control hydraulic motor drive fan main cooling system, can achieve fast and efficient interval temperature work and reduce fan power consumption.
- / Integral cab, transparent visual field, good sealing.
- / With integrated and multi-functional operating handle and electro-hydraulic proportional control, easy to lift, tilt and operate. With LUDV main control multiple-way valve, it can realize fast response, precise operation and achieve fine repeatability.
- / For engine revolution handle, following control is applicable to reduce the operator's load. Centralized fault warning is concise and clear, reducing driver tension.
- / With the centralized pressure test point, convenient opening of the body cover, hood and manual tilting of the cab for easy maintenance.
- / Equipped with FIMS cloud intelligent forklift truck management system, remote intelligent monitoring, better promote equipment management and logistics management.

Standard Specification

- / Duplex wide view mast
- / Fork hydraulic distance adjustment
- / Standard fork
- / Cab
- / Air conditioner
- / Full hydraulic power steering
- / Four way multi-way valve
- / OPS system
- / Steering wheel adjustable device
- / High level exhaust system
- / Traction device
- / Battery main switch
- / Reverse Sensor
- / LCD bus instrument
- / Median instructions
- / Parking brake indication
- / Charging indicator
- / Preheat indicator
- / Engine oil pressure alarm
- / Empty filter alarm
- / Accumulator low voltage alarm
- / Alarm of hydraulic oil and oil filter
- / Oil-water separator alarm
- / Engine fault alarm
- / LED lights
- / Water thermomete
- / Fuel meter
- / Oil temperature meter
- / Time meter
- / Pneumatic tyre
- / Back-Up Buzzer
- / Fanfare horn
- / Manual tilting pump
- / Handrail multi-directional adjustable device
- / Tools

Options

- / Customized color
- / Forks of other specifications
- / Mast of other specifications
- / Solid tyre
- / Truck interphone
- / Voice Back-Up Buzzer
- / Electronic alarm lamp (with \ without control switch)
- / Rear view system (with storage)
- / Front and rear view system (with storage)
- / Spark arrester
- / Fire extinguisher (2kg\4kg)
- / Automatic fire extinguisher
- / Mast LED working light
- / Four-way traffic recording system
- / Speed limits
- / Blue light
- / Weighing system
- / Air prefilter
- / Conducting electrostatic chain
- / Fan
- / Electric tilting pump

